

Westbridge Design & Construction Limited



COMPANY PROFILE

www.westbridgelimited.com



Who We Are

Westbridge Designs and Construction Limited is a fully integrated, 100% design and build construction service provider with a dedicated team of professionals to undertake civil and building infrastructure projects. We provide professional client-focused construction solutions. We go above and beyond on every project and deliver on our promises with integrity. We are registered both in Canada and Nigeria with the business authorities respectively, as a design, building and civil engineering contracting firm and is qualified to tender for public sector contracts with unlimited tender sums.



Vision

To be a global company, a leader in our industry sectors by responsibly delivering long-term value and growth focused solutions that engender sustainable business successes that improve the quality of life and foster development.



Mission

Through partnership with customers, employees, shareholders, partners, government and the communities in which we operate, we will leverage our group strength and sector expertise to deliver essential solutions that enable them do their businesses better or improve the quality of life.

Key mission statement summary:

Key Partners. Significant Solutions.

Payoff ... Our pay off, 'Doing It Right' stems from the fact that no matter the design or construction project, we have no choice than to do it right.

Quality Policy

We are committed to ensuring clients' satisfaction in all aspects of our operations. We shall implement our Total Quality Management System to seek continual Improvement towards achieving higher Company's Performance by:

Communicating our Quality Policy and practices to all employees, clients and business associates;

Complying with relevant design and construction legislation and regulations;

Providing quality products and services at competitive rates on time and within expectation;

Promoting quality culture with emphasis on 'do it right' every time in all areas





Our range of Innovatively
Designed Products



Design & Architectural Consultancy

- Multi-Disciplinary Design & Master Planning
- Property Conception and Reality Make-ups
- Land Surveying Building
- Project Management

Design & Building Projects

- Residential
- Institutions
- Industrial
- Commercial
- Hangars
- Warehouses
- Military Camps & Facilities





General Constructions

- Highways, construction of Roads
- Bridges
- Waterways
- Dams
- Wharves
- Railways
- Manufacturing Facilities
- Power Plants
- Communication Projects
- Borehole Drilling
- Drainage Systems
- Mining Rehabilitation
- Wind Turbine
- Hydro-energy | Dams
- Solar Energy

Our Edge

- Dedicated teams of professionals and partners with engineering expertise and experience
- Ability to offer a full range of expertise across the entire design and construction value chain for our projects
- Reliable, prompt and customer-centric after sales service
- Experienced skilful workforce
- Comprehensive and established processes on quality, health, safety, security and environmental in place to safeguard our client's interest.



Corporate Values

INTUITION

- We think deeply about the problems
- We solve the problem with real understanding, applying our expertise for the best results.
- We apply intelligence with the future in mind

INTEGRITY

- We make the promise a reality
- We create standards and maintain it with the highest level of integrity at all levels.
- We can be trusted to deliver reliable long – term solutions

INTEGRAL

- We are one as a team
- We operate as an integrated firm with a collective sense of commitment, a unified brand that always deliver what it promises.
- We are a core part of the success of our customers, seamlessly providing services that are essential to their businesses.

Strategy

- Our strategic objective is to deliver projects that fulfil the customer's specifications. These specifications include the project the project being delivered on time, within budget and complete legitimacy.
- Our leverage is derived from a wide spectrum of social groups and our expertise is to deliver medium and large projects in African .
- In order to fulfil our strategic objective, we apply a unique combination of design, construction and project management.
- We leverage our CORE COMPETENCE and EXPERTISE to deliver CIVIL ENGINEER, INFRASTRUCTURE and BUILDING PROJECTS in African.



Commitment

Leadership

Using our expertise ,experience and vision to pursue innovation ,empowerment and growth.

Employees

Enhancement in the diversity ,skills, competence and empowerment of our workforce.

Customers

we are endeavouring to gain preferred status by delivering the best service and product through legitimacy.



Core Competence

- Project management
- Good governance
- sound construction experience and practices
- Flexibility
- Successful legitimate Empowerment
- Design and construct projects /
- Turnkey projects





Environmental

Westbridge Design and Construction Ltd. believe that the quality of the air, water and soil should be protected for the continued benefit of all ecosystems. Thus, the needs of present and future generations will be met. We committed to act responsibility and with due regard to the effects of its operations and services on the environment ,protecting the environment is an obligation not a choice.

Health & Safety

We committed to the highest standards of health and safety and will take all reasonable steps to ensure the health and safety of all employees.

Empowerment

Westbridge Ltd has engaged the issue of empowerment boldly and decisively with sold business partners who have an active interest in our market .

Westbridge ltd has what it takes to ensure good governance and corporate manage to cope with the increasing workload.

Geology & Geotechnical Engineering

We offer geological, geotechnical and hydrogeological planning, consulting and site supervision for infrastructure , geothermal energy, wind power ,hydro-power and mining project .

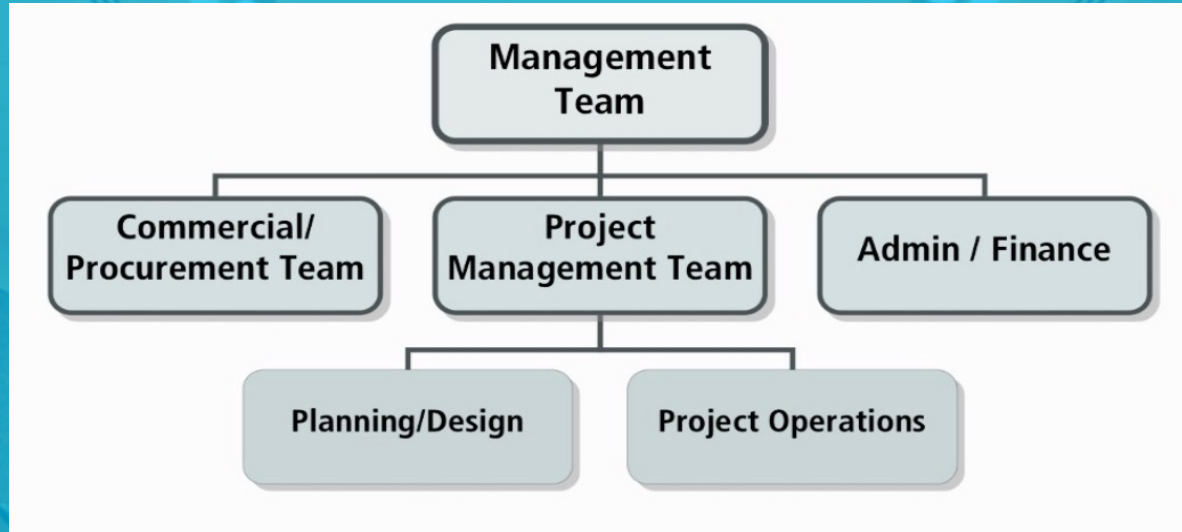
Service

- Development of geological, geotechnical and hydrogeological investigation programmes
- Design, assessment and site supervision of geothermal energy project
- Geological ,structural geological and hydrogeological modelling
- interpretation geological ,geotechnical ,geophysical and hydrogeological data
- Geotechnical design of ground and rock slopes and foundations of all kinds
- Geotechnical monitoring, especially of tunnelling sites and design



A large, modern conference room with a long, polished wooden table. The table is surrounded by black office chairs. On the table, there are several papers and microphones. The ceiling is curved and features numerous recessed lights. The walls are light-colored, and there are large windows on the right side. The overall atmosphere is professional and bright.

Our Organisation Structure



Our Management Team

The business is driven by our 4 working directors, collectively they accumulated more than 40 years of work experience in the building industry. They are involved in the business development, procurement, project management and administration of the company.

The management team proactively gathers feedback, identifies changes in business environment, reviews work processes and communicates key learning point and company policy to all staff at regular meetings.

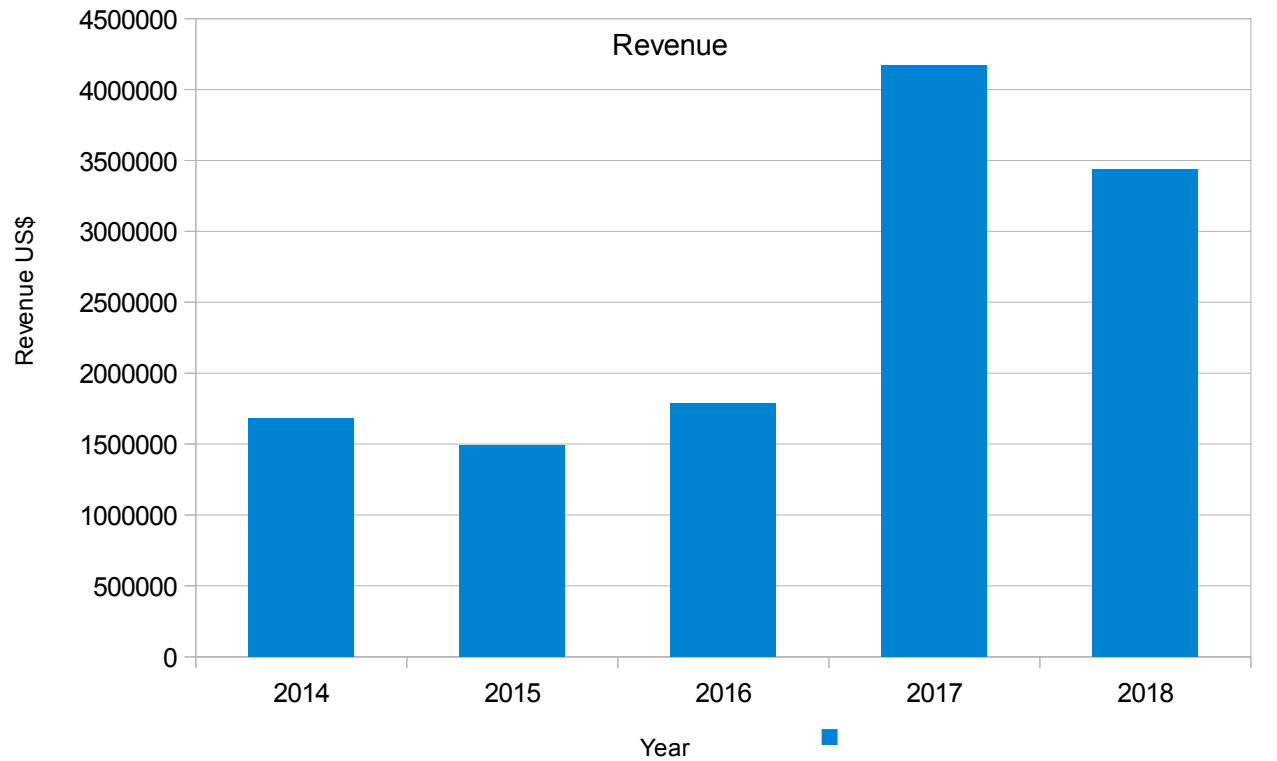


Our People

Our people are crucial in the delivery of our services to our clients. In order to ensure that everyone is equipped with the right skills, knowledge and attitude, a comprehensive training programme is put in place to constantly upgrade our people in technical and management skills.

We believe firmly in providing the right training, accredited certification and practical knowledge for our people, in order for them to execute their duties and responsibilities confidently. Our aim is to stay relevant to ever-changing market place and client's requirements.

Revenue and sectorial breakdown for last 5 years



1,679,000.00

1,492,000.00

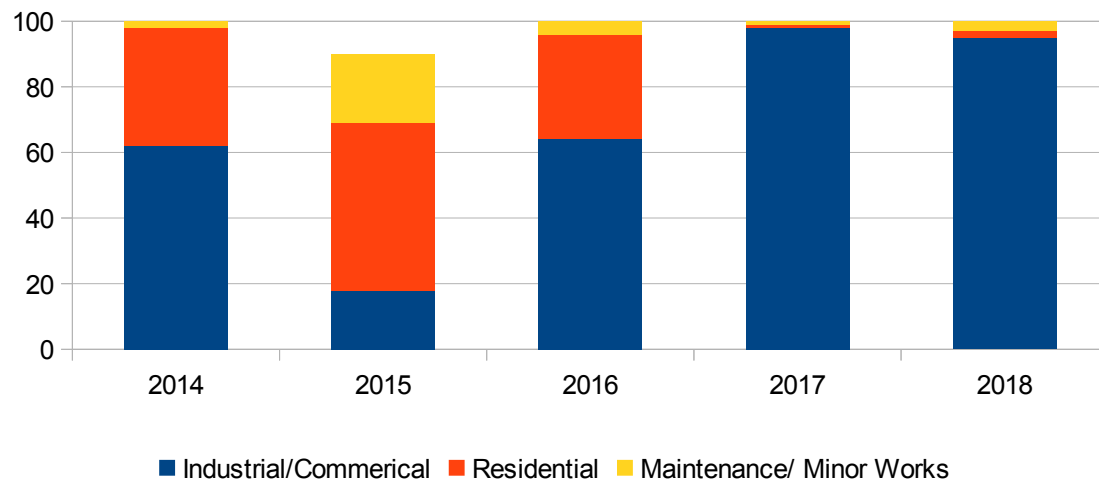
1,788,000.00

4,171,000.00

3,439,000.00

Secotoral Breakdown of Revenue

(as percentage of revenue)



A person wearing a cap and a light-colored shirt is aiming a rifle. The background shows a shooting range with a target board visible on the right. The entire image has a blue tint.

DVSR

Digital Video Shooting Range

This interactive video shooting simulator was developed for firearms training in indoor shooting ranges for the police and security forces.

The shooting systems of technology includes all components for the installation and operation of indoor shooting ranges. More so, the complete interior construction, bullet trap systems, surveillance systems, screen projection systems etc. are professionally installed by our specialists.

The principal components of this is our “DVSR” training system for real and laser shooting. Rounded off with laser simulation weapons with real recoil simulation as well as special training. We are constantly adapting our product range to the growing needs.

Instruction and training

- Comprehensive training after successful handover it is a part of the scope of our services.
- Instruction in the handling of our systems at various training levels.
- Training alongside shooting
- Customized specific training courses
- Refresher courses for all software versions and DPCS programs.
- Intensive instructions in the creation of own tactical demonstrations films.



Work Scope

- Main contractor for the project. There are a total of 6 building blocks and the works included:
- Demolition works
- Micro-Piling works
- Structural Steel Works
- New canopy including feature wall
- Architectural works
- External works including drains, car parks and roads
- Mechanical and Electrical works

Addition & Alteration Works with Extensions to Existing Single Storey Factory / Office with Mezzanine Floors.

- Location: Benin Republic
- Contract duration: 8 months
- Project Contract Value:
- \$ 5.2 million



Work Scope

Main contractor for the project . General site area is over 54,000m². Work executed includes:

- Demolition of existing 5 storey building
- General site levelling
- New drainage works
- Storage platform with compacted mill waste
- New roads and trailer parking area
- Electrical works

Works was handed over in 2 phases to meet client's business requirements .

Building And Replacement Works To Open Space Including Related Road, Drains & Demolition Of Existing Hostel Building at Ado Ekiti state NIGERIA

Contract Duration: 5 months

Project Contract Value: \$2.3million



SOME OF OUR CLIENTS INCLUDE:

- The National Assembly
- Federal Ministry of Agriculture and Water Resources
- The Nigerian Police Forces
- Federal Ministry of Works
- Federal Ministry of Health

Work Scope

Main Contractor for the project. Works executed includes:

- General Site Levelling
- Micro-Piling
- New Drainage
- RC Walled Tanks for waste treatment
- Structural Steel Works
- Electrical works

Include coordination with specialist sub-contractor to make provisions for piping and equipment installation and commissioning.

•

New MBR Validation Plant to Water Reclamation Plant

- Location: Accra, Ghana
- Contract Duration: 6 months
- Project Contract Value: \$ 3 825,000.00



Work Scope

Project Management Services for internal and external wet works packages C15A and C15B Module.

As project management team for our package contractor, we plan, schedule, organize the resources, execute and control budget and work flow, manage a safety program and ensure quality and timely delivery of the works.

We also supervised all sub-contractors in our package and interfaced with other package contactors in the project.

Works include:

Internal and external block wall and plastering works, waterproofing works, floor finishes to all staircases and landings.

REC Solar Production Facility

- Location: Benin Republic
- Contract Duration: 15 months
- Project Contract Value: \$13.8 million



A detailed architectural floor plan of a house, rendered in a light blue color scheme. The plan includes several rooms: a Kitchen (121) with a sink and stove, a Family Room (125) with a fireplace, a Dining Room, a Powder Room (119), a Pantry (122), and a Stairs (132) area. Dimensions are provided for various sections, such as 13'-0 1/2" for the Pantry and 29'-6" for a large open area. The plan also shows a light well, a line of sight above, and various structural elements like walls, doors, and windows. The text "Project References" is overlaid in the center in a large, white, sans-serif font.

Project References

Project Name and Country	Name of Client	Nature of work	Year
Construction of reinforced concrete wall and renovation of pump house at Honeywell Flour mills Ltd., Nigeria	Honeywell Flour Mills Ltd.	Civil Work	2008
Construction of Lightwell Garden Estate , Utako Abuja FCT, Nigeria	Uruga Real Estate Ltd	Civil Work	2009
Ultra modern market at Ikeja, Lagos, Nigeria	Woobs Resources Ltd.	Civil Work	2009
Construction of 20km road in Ekiti East Lagos, Nigeria	Ekiti State Government	Road Works	2009
Renovation of Ekiti State Governor House	Ekiti State Government	Renovation works	2010
Construction of New Ecobank branch Victoria Island	Ecobank Nigeria	Branch Development, Civil Work	2014
Equitorial Trust Bank, Ketu branch, Lagos, nigeria	ETB Plc	Branch Development, Civil Work	2010
Access Bank Plc, construction Gboko Benue State	Access Bank Plc	Civil Work	2017
250 Commercial vehicle Federal Government Abuja, Nigeria	FCT Abuja	Acquisition	2014
Rehabilitation of railway Infrastructure in Lagos 441km	Federal Government	Rehabilitation	2012
Factory Extension at WAMCO Plc Nigeria	WAMCO (Nig) Plc	Civil and Steal works	2016
Construction of 55km Road Inisha Odo Atin, Osun State, Nigeria	Osun State Government	Road Works	2017

Project Name and Country	Name of Client	Nature of work	Year
Construction of 40m Tower Green Field for Etisalat Oshogbo	Etisalat Nigeria	Telecommunication	2009
Global Com Ikba Oba Akar – the Warehouse Construction	Globalcom Nigeria	Telecommunication	2016
Construction of Chicken Republic outlet at Eta Abgbar Road Calabar	Food Concept	Civil Work	2008
Procurement and Construction of 6-inch stainless steel pipe drainage, Onne, Port Harcourt, Nigeria	Kellogb	NNPC	2001
Construction of mobile service station Obanikoro, Lagos	Mobil Nigeria Plc	Civil Work	2011
Construction of South Bridge Station Kaduna	Total Nigeria Plc	Civil Work	2011
CONOIL Mega Filling Station at Ogui Road, Enugu	Cachez Turnkey	Filing Station, Civil Work	2008
Construction of Bundwall for Oando Terminal I, Apapa Lagos	Oando Nigeria Plc	Civil Work	2011
Reconstruction of Mobil Service Station Area 1 FCF Abuja	Mobil Nigeria, Plc	Civil Work	2012
Reconstruction of Total Filling Station at Kashim Ibrahim Road, Makurdi	Total Nigeria Plc	Civil Work	2008





Certificate of Business:

Westbridge Design and Construction Ltd.:

Corporate of Incorporation

Corporate Access Number 2020509135

Government of Alberta, Canada

Certificate of Incorporation RC1419122

Corporate Affairs Commission

Federal Republic of Nigeria

Licensed Builders

Licensing Code GB1

Description: General Building Works (Class 1)

Contact Details

Nigeria Address (Lagos) 1: 4 Adeniran Ogunsanya street Surulere Lagos

Nigeria Address (Lagos) 2: 102/ 104 new Iyana ipaja road Alimosho bus stop Lagos

Nigeria Address (Abuja) 3: Annex 2 2nd floor Williands Plaza, Plot 511 Herbert Macaulay Way, Wuse Zone 4, Abuja.

Canada Address: 419 Templeton Road NE , Calgary Canada, AB T1Y 4L8.

United Kingdom Address: 117 Radford Road, Hyson Green, Nottingham NG7 5DU U.K.

Contact :

Esther : 08023877002

Charles : 08023053102

Michael : 08058398280

Email: info@westbridgelimited.com

More contact information: www.westbridgelimited.com



The Future is Here!

We are looking forward to it
Wherever, Whenever, Together
With you!